



**RIGGING HARDWARE**

**5**



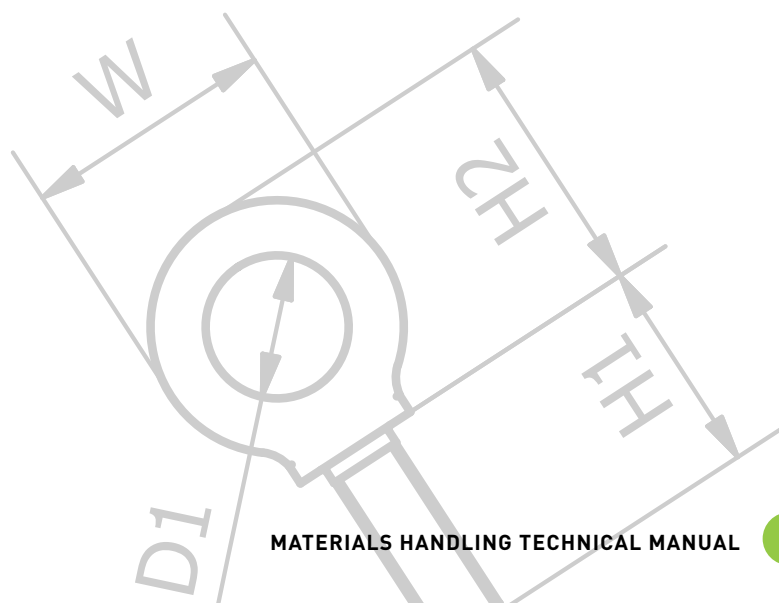
Beaver maintains a comprehensive range of rigging hardware items for the most rigorous working environment. Comprising of turnbuckles in all configurations, collared eye bolts and eye nuts, chain split links, snap hooks, quick links and swivels we have the range to suit your work load.



# Contents

## RIGGING HARDWARE

BEAVER RIGGING SCREWS	4
BEAVER STUB TURNBUCKLES	7
BEAVER SUPER BUCKLES	8
BEAVER COMMERCIAL TURNBUCKLES	9
BEAVER LIFTING EYE BOLTS - COLLARED	12
BEAVER LIFTING EYE BOLTS - SHOULDERED	16
BEAVER LIFTING EYE NUTS - SHOULDERED	17
BEAVER CHAIN SPLIT LINKS	18
BEAVER SNAP HOOKS, QUICK LINKS, MOORING SWIVELS	19
BEAVER MOORING SWIVELS	20
PRODUCT REFERENCE GUIDE	21







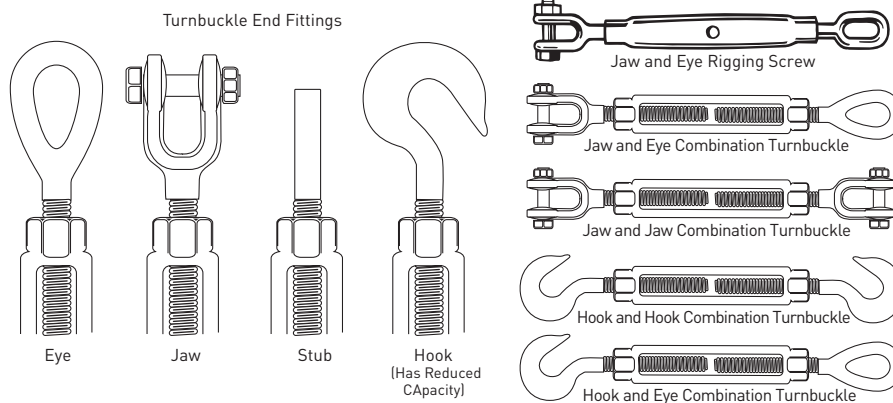
## BEAVER RIGGING SCREWS



### Beaver Rated Rigging Hardware

Beaver Rated Rigging Hardware complies with a number of different standards. They have a working load limit (W.L.L) and are rated for lifting applications. Beaver's range of quality rigging hardware is manufactured from the finest milling techniques and designed for both heavy industry use and general hardware applications.

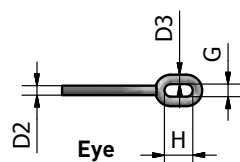
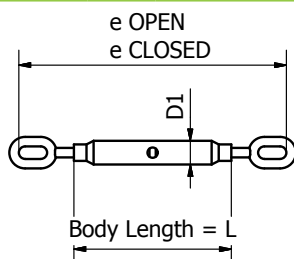
### Beaver Rigging Screws and Turnbuckles



### Beaver Eye and Eye Rigging Screws BS 4429

Tested Hot Dipped Galvanised

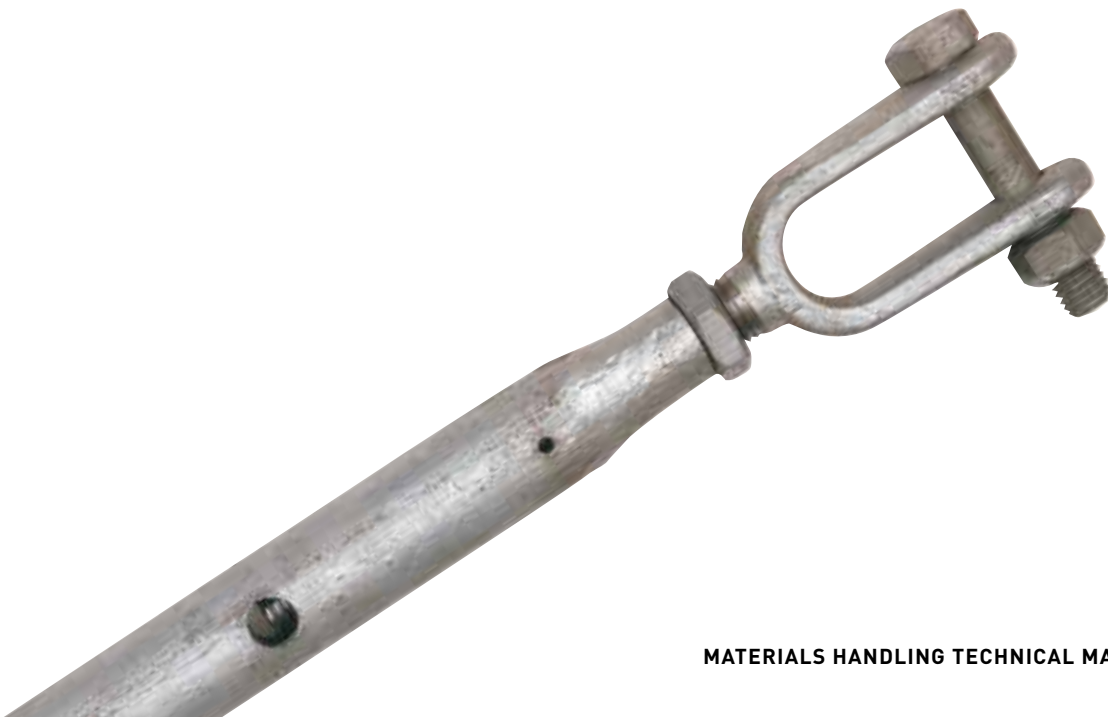
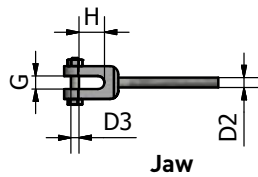
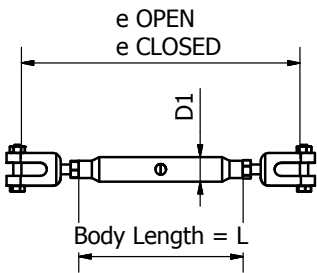
Code	Size mm	Finish	e Open mm	e Closed mm	L mm	D1 mm	D2 mm	D3 mm	G mm	H mm	W.L.L Tonne	Pack Qty	Weight Per 100 (kg)	UOM
327310	10	Galvanised	359	259	152	21	10	8	11	25	0.3	100	38	Each
327313	13	Galvanised	465	369	229	25	13	11	14	36	0.5	50	75	Each
327316	16	Galvanised	523	393	229	27	16	14	18	40	0.75	30	130	Each
327320	20	Galvanised	563	413	229	34	20	17	25	55	1.25	20	185	Each
327324	24	Galvanised	786	589	356	42	24	20	26	57	2.5	10	380	Each
327333	33	Galvanised	830	645	381	51	33	25	34	64	5	5	680	Each
327338	38	Galvanised	870	655	407	57	38	27	38	75	6	3	1000	Each



## Beaver Jaw and Jaw Rigging Screws with Locknuts BS 4429

*Tested Hot Dipped Galvanised*

Code	Size mm	Finish	e Open mm	e Closed mm	L mm	D1 mm	D2 mm	D3 mm	G mm	H mm	W.L.L Tonne	Pack Qty	Weight Per 100 (kg)	UOM
328310	10	Galvanised	349	235	152	21	10	8	11	21	0.3	100	44	Each
328313	13	Galvanised	524	343	229	25	13	9	19	35	0.5	50	85	Each
328316	16	Galvanised	550	361	229	27	16	13	22	51	0.75	30	140	Each
328320	20	Galvanised	550	387	229	34	20	16	22	48	1.25	20	220	Each
328324	24	Galvanised	822	556	356	42	24	22	32	65	2.5	10	450	Each
328333	33	Galvanised	872	604	381	51	33	24	38	76	5	5	640	Each
328338	38	Galvanised	949	670	407	57	38	33	47	90	6	10	1260	Each
328350	50	Galvanised	977	743	407	76	48	42	51	121	10	5	2400	Each

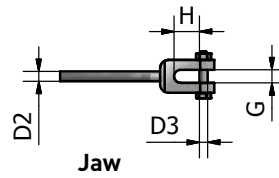
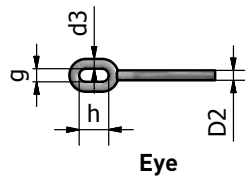
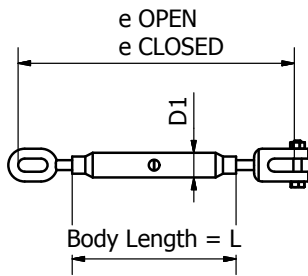


## BEAVER RIGGING SCREWS (CONT'D)

### Beaver Jaw and Eye Rigging Screws BS 4429

Tested Hot Dipped Galvanised

Code	Size mm	Finish	e Open mm	e Closed mm	L mm	D1 mm	D2 mm	D3 mm	G mm	H mm	g mm	h mm	d3 mm	W.L.L Tonne	Pack Qty	Weight Per 100 (kg)	UOM
329310	10	Galvanised	349	235	152	21	10	8	11	21	11	25	8	0.3	40	40	Each
329313	13	Galvanised	527	334	229	25	13	9	19	35	14	36	11	0.5	20	100	Each
329316	16	Galvanised	556	375	229	27	16	13	22	51	18	40	14	0.75	15	140	Each
329320	20	Galvanised	654	385	229	34	20	16	22	48	25	55	17	1.25	15	200	Each
329324	24	Galvanised	812	528	356	42	24	22	32	65	26	57	20	2.5	5	440	Each

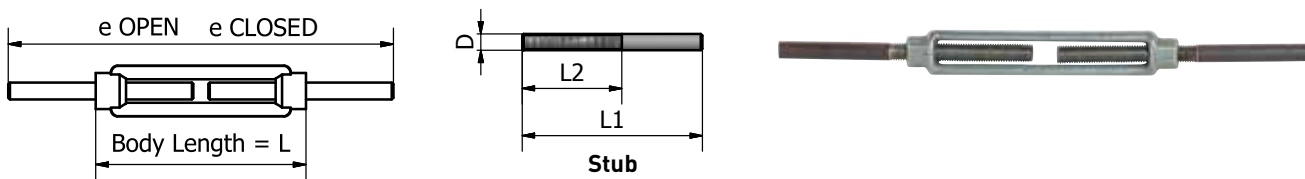


## BEAVER STUB TURNBUCKLES

### Beaver Forged Stub and Stub Heavy Duty Turnbuckles

Hot Dipped Galvanised Body and Black Stubs Ends to BS 716

Code	Chain Size mm	Finish	e Open mm	e Closed mm	L mm	D mm	L1 mm	L2 mm	Pack Qty	Weight Per 100 (kg)	UOM
319013	13	Galvanised	475	335	191	12	165.5	95.5	10	80	Each
319016	16	Galvanised	495	365	204	16	174	102	10	120	Each
319020	20	Galvanised	500	365	217	20	187.5	108.5	8	200	Each
319023	23	Galvanised	535	400	232	24	205	116	4	312	Each
319025	25	Galvanised	554	400	252	33	200	126	2	550	Each
319032	32	Galvanised	680	525	255	32	260	135	3	461.76	Each

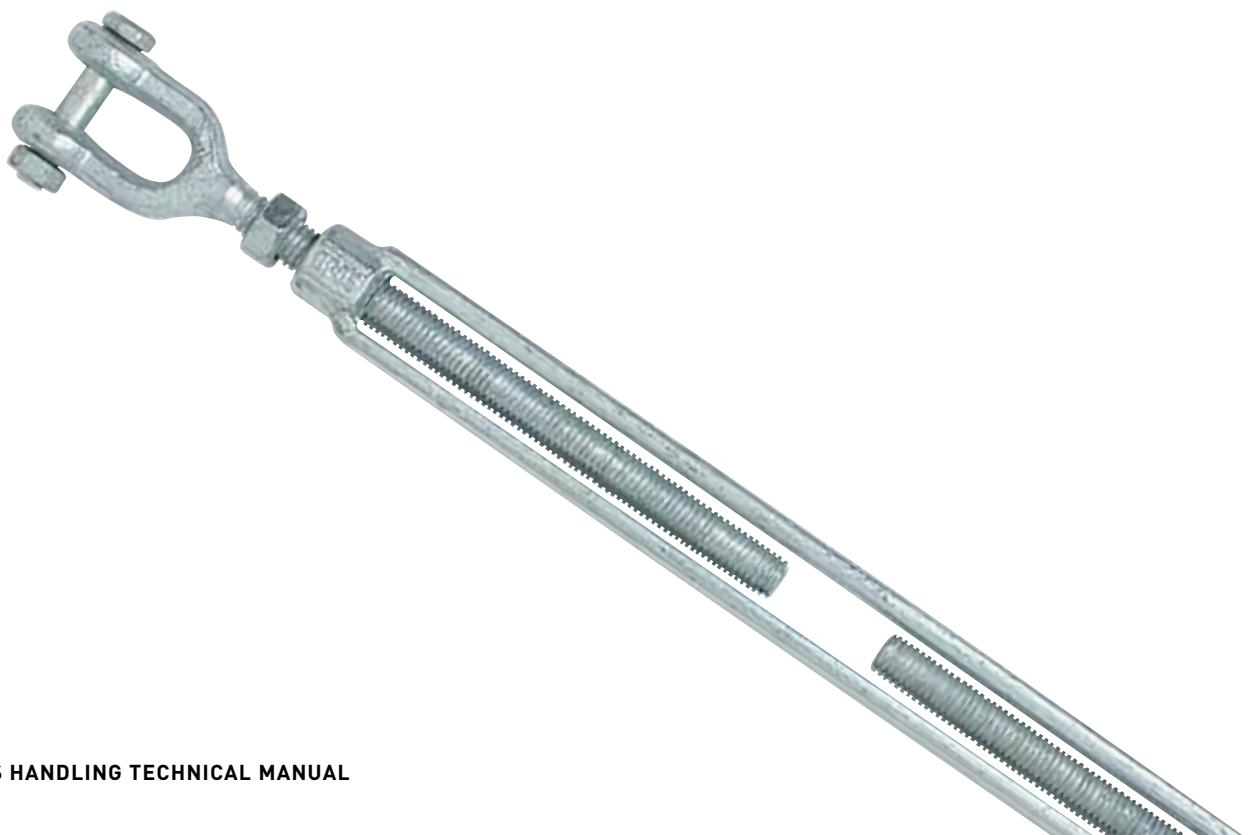
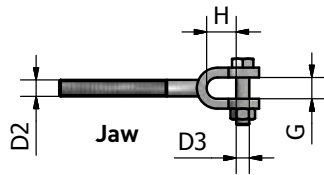
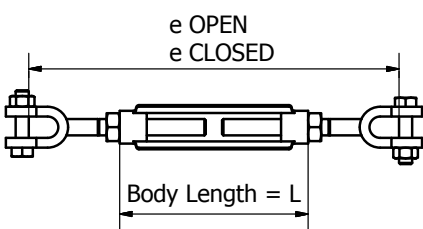


## BEAVER SUPER BUCKLES

### Beaver Super Buckles Jaw and Jaw with Lock Nuts. Federal Spec FF-T-791

*Forged Hot Dipped Galvanised*

Code	Size Inches	Finish	e Open mm	e Closed mm	L mm	D2 mm	D3 mm	G mm	H mm	W.L.L Tonne	Pack Qty	Weight Per 100 (kg)	UOM
322412	12 x 305	Galvanised	780	485	305	12.7	9.53	16	46	900	20	109	Each
322416	16 x 305	Galvanised	676	459	229	15.88	12.70	21	60	1500	10	177.5	Each
322419	19 x 305	Galvanised	570	428	152	19.05	15.88	26	71	2300	8	298	Each
322422	22 x 305	Galvanised	873	580	305	22.23	19.05	26	71	3200	5	371	Each
322425	25 x 305	Galvanised	1221	777	457	25.4	22.23	31	82	4500	4	596.5	Each





## BEAVER COMMERCIAL TURNBUCKLES



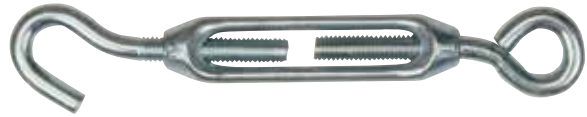
### Beaver Commercial Rigging Hardware

Beaver Commercial Rigging Hardware intended use is for non-lifting applications, such as; guying and rigging of fences, pillars etc. In order to increase corrosion against the toughest environment, they are available in both hot dipped galvanised and zinc plated.

### Beaver Hook and Eye Commercial Turnbuckles

*Cast Electro Galvanised*

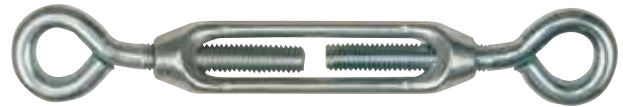
Code	Size mm	Finish	Pack Qty	Weight Per 100 (kg)	UOM
320205	5	Galvanised	500	15	Each
320206	6	Galvanised	200	16	Each
320208	8	Galvanised	150	24	Each
320210	10	Galvanised	100	39	Each



### Beaver Eye and Eye Commercial Turnbuckles

*Cast Electro Galvanised*

Code	Size mm	Finish	Pack Qty	Weight Per 100 (kg)	UOM
321205	5	Galvanised	500	15	Each
321206	6	Galvanised	200	16	Each
321208	8	Galvanised	150	24	Each
321210	10	Galvanised	75	39	Each



## BEAVER COMMERCIAL TURNBUCKLES (CONT'D)

### Beaver Hook and Eye Commercial Turnbuckles

*Forged Hot Dipped Galvanised*

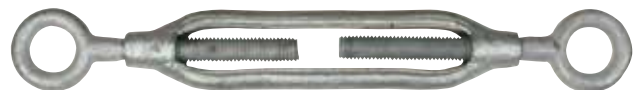
Code	Size mm	Finish	Pack Qty	Weight Per 100 (kg)	UOM
323206	6	Galvanised	250	8	Each
323208	8	Galvanised	150	14	Each
323210	10	Galvanised	100	26	Each
323213	13	Galvanised	40	50	Each
323216	16	Galvanised	25	100	Each
323220	20	Galvanised	15	168	Each
323223	22	Galvanised	8	246	Each
323225	25	Galvanised	8	256	Each



### Beaver Eye and Eye Commercial Turnbuckles

*Forged Hot Dipped Galvanised*

Code	Size mm	Finish	Pack Qty	Weight Per 100 (kg)	UOM
324206	6	Galvanised	250	8	Each
324208	8	Galvanised	150	14	Each
324210	10	Galvanised	100	26	Each
324213	13	Galvanised	40	50	Each
324216	16	Galvanised	25	100	Each
324220	20	Galvanised	15	168	Each
324223	22	Galvanised	8	246	Each
324225	25	Galvanised	8	256	Each



### Beaver Fence Straining Screws

*Forged Hot Dipped Galvanised*

Code	Size mm	Finish	Pack Qty	Weight Per 100 (kg)	UOM
326216	16	Galvanised	20	124	Each



## Beaver Forged Stub and Stub Commercial Turnbuckles

*Hot Dipped Galvanised Body and Black Stub End*

Code	Size mm	Finish	Pack Qty	Weight Per 100 (kg)	UOM
325010	10	Galvanised	100	26	Each
325013	13	Galvanised	40	50	Each
325016	16	Galvanised	25	100	Each
325020	20	Galvanised	15	168	Each
325023	23	Galvanised	8	246	Each
325025	25	Galvanised	8	256	Each

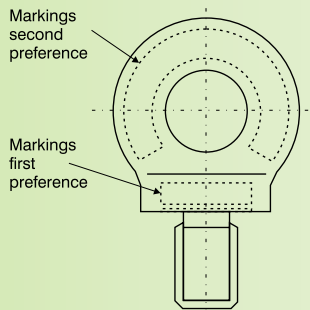


## BEAVER LIFTING EYE BOLTS – COLLARED



### Beaver Lifting Eyebolts And Eyenuts

Beaver Lifting Eyebolts and Eyenuts come in a range of threads including BSW, UNC and Metric and are predominately used for lifting applications. Eyebolts and Eyenuts both carry the markings as depicted in image below.



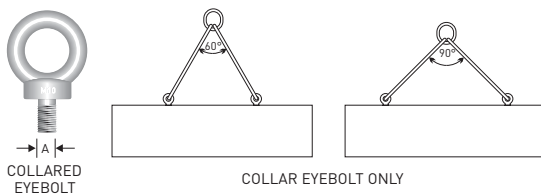
It is recommended that all eyebolts used for lifting be of forged steel and be equipped with shoulders or collars. The plain or shoulderless eyebolt is fine for vertical loading but as soon as it is loaded at an angle it is subjected to bending and the load it can safely carry is reduced.

### Beaver Lifting Eyebolts and Eyenuts

VERTICAL LIFT ONLY  
PLAIN EYEBOLT IS ACCEPTABLE



ANGULAR LIFTS  
COLLARED EYEBOLT ONLY



The Australian Standard covering collared eyebolts is AS 2317-1984. The section on "Care and Use of Eyebolts" is taken from that standard.  
NB: Only use rated eyebolts for fitting.

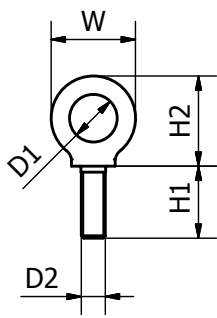
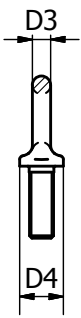
WLL for Class 3 load application as specified by AS 1418, Part 1

Nominal size of eyebolt	WLL for Class 3 load application as specified by AS 1418, Part 1					
	Single Eyebolt		Pair of eyebolts (see note)			
	Axial	Trunnion-type mounting	Perpendicular	Included angle 30°	Included angle 60°	Included angle 90°
M12	0.32	0.08	0.16	0.40	0.26	0.16
M16	0.63	0.16	0.32	0.79	0.50	0.32
M20	1.25	0.31	0.63	1.60	1.00	0.63
M24	2.00	0.50	1.00	2.50	1.60	1.00
M30	3.20	0.80	1.60	4.00	2.60	1.60
M36	6.00	1.30	2.60	6.30	4.00	2.50
M42	6.30	1.60	3.20	7.90	5.00	3.20
M48	8.00	2.00	4.00	10.00	6.40	4.00
M56	12.00	3.00	6.00	15.00	9.60	6.00
M64	16.00	4.00	8.00	20.00	13.00	8.00
M72	20.00	6.00	10.00	25.00	16.00	10.00
Reduction factor for single eyebolt						
	1	0.25	0.25	0.63	0.40	0.25

## Beaver Lifting Collared Eye Bolts with B.S.W Thread BS 529

Conforms to AS 2317-1984

Code	Size Inches	Finish	W mm	H1 mm	H2 mm	D1 mm	D2 mm	D3 mm	D4 mm	W.L.L Tonne	Pack Qty	Weight Per 100 (kg)	UOM
358010	3/8"	Self Colour	32	17	35	14	9.53	9	21	0.25	400	5.5	Each
358013	1/2"	Self Colour	41	22	42.5	19	12.70	11	28	0.4	150	14.6	Each
358016	5/8"	Self Colour	52	28	58	24	15.88	14	36	0.8	60	30	Each
358019	3/4"	Self Colour	62	33	69	28	19.05	17	43	1.6	40	52.5	Each
358022	7/8"	Self Colour	73	39	80.5	33	22.23	20	50	2	20	90	Each
358025	1"	Self Colour	82	44	92	38	25.40	22	57	2.5	15	106	Each
358028	1-1/8"	Self Colour	92	50	103	42	28.58	25	64	3.5	10	160	Each
358032	1-1/4"	Self Colour	104	55	116	48	31.75	28	71	5	6	260	Each
358038	1-1/2"	Self Colour	123	67	137.5	57	38.10	33	85	7	4	350	Each



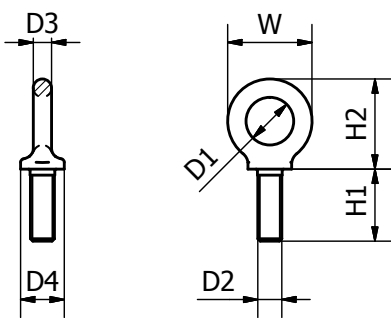


## BEAVER LIFTING EYE BOLTS - COLLARED (CONT'D)

### Beaver Lifting Collared Eye Bolts with UNC Thread BS 529

Conforms to AS 2317

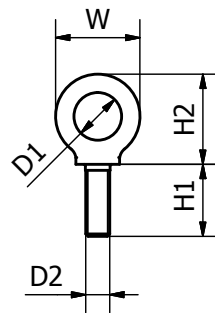
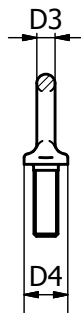
Code	Size Inches	Finish	W mm	H1 mm	H2 mm	D1 mm	D2 mm	D3 mm	D4 mm	W.L.L Tonne	Pack Qty	Weight Per 100 (kg)	UOM
360010	3/8"	Self Colour	33	9	36	15	9.53	9	22	0.25	400	6	Each
360012	1/2"	Self Colour	44	11	48	20	12.70	11	29	0.4	150	15	Each
360016	5/8"	Self Colour	52	14	58	24	15.88	14	36	0.8	60	27	Each
360019	3/4"	Self Colour	66	17	73	30	19.05	18	45	1.4	40	54	Each
360022	7/8"	Self Colour	77	20	84	35	22.23	21	52	2	40	85	Each
360025	1"	Self Colour	85	22	94	39	25.40	23	58	2.5	25	113	Each
360032	1-1/4"	Self Colour	106	28	117	48	31.75	29	72	5	6	237	Each
360038	1-1/2"	Self Colour	118	33	131	54	38.10	32	81	7	6	312	Each
360044	1-3/4"	Self Colour	148	39	164	68	44.45	40	101	8	6	627	Each
360050	2"	Self Colour	168	44	186	76	50.80	46	115	10	4	958	Each



## Beaver Lifting Collared Eye Bolts with Metric Threads BS 4278

"Gold" Zinc Dichromate Finish, Conforms to AS 2317

Code	Size mm	Finish	W mm	H1 mm	H2 mm	D1 mm	D2 mm	D3 mm	D4 mm	W.L.L Tonne	Pack Qty	Weight Per 100 (kg)	UOM
359008	8	Zinc Dichromate	33	18	36	15	8	18	22	0.15	400	6	Each
359010	10	Zinc Dichromate	33	18	36	15	10	18	22	0.25	180	6	Each
359012	12	Zinc Dichromate	33	18	36	15	12	18	22	0.4	110	6	Each
359016	16	Zinc Dichromate	44	23	48	20	16	24	29	0.8	80	15	Each
359020	20	Zinc Dichromate	59	32	65	27	20	32	40	1.6	45	38	Each
359022	22	Zinc Dichromate	64	35	73	30	22	34	45	1.6	30	54	Each
359024	24	Zinc Dichromate	77	40	84	35	24	42	52	2.5	10	85	Each
359030	30	Zinc Dichromate	96	51	106	44	30	52	65	4	4	162	Each
359036	36	Zinc Dichromate	118	63	131	54	36	64	81	6.3	4	312	Each

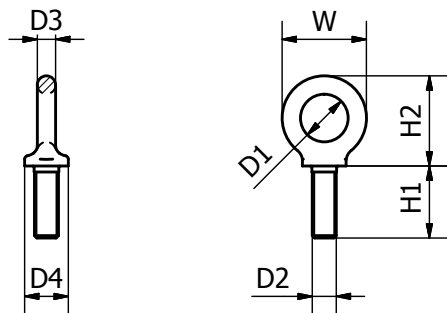


## BEAVER LIFTING EYE BOLTS – SHOULDERED

### Beaver Metric Shouldered Eye Bolts to DIN 580

*“Gold” Zinc Dichromate Finish, Conforms to AS 2317*

Code	Size mm	Finish	W mm	H1 mm	H2 mm	D1 mm	D2 mm	D3 mm	D4 mm	W.L.L Tonne	Pack Qty	Weight Per 100 (kg)	UOM
359108	8	Zinc Dichromate	36	13	36	20	8	8	20	0.14	400	6	Each
359110	10	Zinc Dichromate	45	17	45	25	10	10	25	0.23	180	11	Each
359112	12	Zinc Dichromate	54	20.5	52	30	12	12	30	0.34	110	18	Each
359116	16	Zinc Dichromate	63	27	61	35	16	14	35	0.7	80	28	Each
359120	20	Zinc Dichromate	72	30	70	40	20	16	40	1.2	50	45	Each
359122	22	Zinc Dichromate	81	35	80	45	22	18	45	1.5	30	67	Each
359124	24	Zinc Dichromate	90	36	90	50	24	20	50	1.8	20	87	Each
359130	30	Zinc Dichromate	108	45	110	60	30	24	65	3.6	4	166	Each
359136	36	Zinc Dichromate	126	54	130	70	36	28	75	5.1	4	265	Each

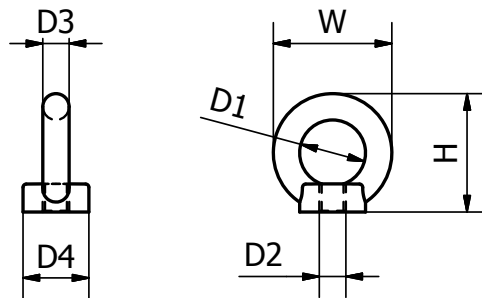


## BEAVER LIFTING EYE NUTS – SHOULDERED

### Beaver Metric Shouldered Eye Nuts to DIN 582

*“Gold” Zinc Dichromate Finish*

Code	Size mm	Finish	W mm	H mm	D1 mm	D2 mm	D3 mm	D4 mm	W.L.L Tonne	Pack Qty	Weight Per 100 (kg)	UOM
359208	8	Zinc Dichromate	36	36	20	8	8	20	0.14	400	5	Each
359210	10	Zinc Dichromate	45	45	25	10	10	25	0.23	180	9	Each
359212	12	Zinc Dichromate	54	52	30	12	12	30	0.34	110	16	Each
359216	16	Zinc Dichromate	63	61	35	16	14	35	0.7	80	24	Each
359220	20	Zinc Dichromate	72	70	40	20	16	40	1.2	50	36	Each
359222	22	Zinc Dichromate	81	80	45	22	18	45	1.5	30	58	Each
359224	24	Zinc Dichromate	90	90	50	24	20	50	1.8	20	72	Each



## BEAVER CHAIN SPLIT LINKS

### Beaver Chain Split Links

*Electro Galvanised*

Code	Size mm	Finish	Pack Qty	Weight Per 100 (kg)	UOM
420103	3.5	Electro Galvanised	5000	0.41	Each
420105	5	Electro Galvanised	1500	1.72	Each
420106	6	Electro Galvanised	800	3	Each
420108	8	Electro Galvanised	400	6.9	Each
420110	10	Electro Galvanised	200	12	Each
420113	13	Electro Galvanised	120	23	Each



### Beaver Chain Split Links

*Hot Dipped Galvanised*

Code	Size mm	Finish	Pack Qty	Weight Per 100 (kg)	UOM
420303	3.5	Galvanised	5000	0.41	Each
420305	5	Galvanised	1500	1.72	Each
420306	6	Galvanised	800	3	Each
420308	8	Galvanised	400	6.9	Each
420310	10	Galvanised	200	12	Each
420313	13	Galvanised	120	23	Each





## BEAVER SNAP HOOKS, QUICK LINKS, MOORING SWIVELS

### Beaver Snap Hooks

Code	Size mm	Finish	Pack Qty	Weight Per 100 (kg)	UOM
425204	4	Electro Galvanised	2500	1.4	Each
425205	5	Electro Galvanised	1400	1.6	Each
425206	6	Electro Galvanised	1000	2.7	Each
425207	7	Electro Galvanised	700	4.4	Each
425208	8	Electro Galvanised	400	6.5	Each
425210	10	Electro Galvanised	200	12.7	Each



### Beaver Quick Links

Code	Size mm	Finish	Pack Qty	Weight Per 100 (kg)	UOM
420603	3.5	Galvanised	3000	0.908	Each
420605	5	Galvanised	1250	2.27	Each
420606	6	Galvanised	800	3.632	Each
420608	8	Galvanised	400	8.172	Each



## BEAVER MOORING SWIVELS

### Beaver Commercial Mooring Swivels

*Eye and Bow Type*

Code	Size mm	Finish	Pack Qty	Weight Per 100 (kg)	UOM
330306	6	Galvanised	250	8.4	Each
330308	8	Galvanised	150	16.2	Each
330310	10	Galvanised	80	27.8	Each
330313	13	Galvanised	35	48.3	Each
330316	16	Galvanised	25	85.0	Each
330320	20	Galvanised	12	134.1	Each
330323	23	Galvanised	10	200.0	Each
330325	25	Galvanised	5	315.0	Each
330328	28	Galvanised	5	640.0	Each



### Beaver Commercial Chain Swivels

*Bow and Bow Type*

Code	Size mm	Finish	Pack Qty	Weight Per 100 (kg)	UOM
335306	6	Galvanised	250	6.0	Each
335308	8	Galvanised	150	13.5	Each
335310	10	Galvanised	80	25.0	Each
335313	13	Galvanised	35	56.0	Each
335316	16	Galvanised	25	120.0	Each
335320	20	Galvanised	12	180.0	Each
335323	23	Galvanised	10	250.0	Each
335325	25	Galvanised	5	410.0	Each



## PRODUCT REFERENCE GUIDE

Part Number	Page Number
319013	7
319016	7
319020	7
319025	7
319032	7
320205	9
320206	9
320208	9
320210	9
321205	9
321206	9
321208	9
321210	9
322412	8
322416	8
322419	8
322422	8
322425	8
323206	10
323208	10
323210	10
323213	10
323216	10
323220	10
323223	10
323225	10
324206	10
324208	10
324210	10
324213	10
324216	10
324220	10
324223	10
324225	10
325010	11
325013	11

Part Number	Page Number
325016	11
325020	11
325023	11
325025	11
327310	4
327313	4
327316	4
327320	4
328310	5
328313	5
328316	5
328320	5
328324	5
328333	5
328338	5
328350	5
329310	6
329313	6
329316	6
329320	6
329325	6
330306	20
330308	20
330310	20
330313	20
330316	20
330320	20
330323	20
330325	20
330328	20
335306	20
335308	20
335310	20
335313	20
335316	20
335320	20

Part Number	Page Number
335323	20
335325	20
358010	13
358013	13
358016	13
358019	13
358022	13
358025	13
358028	13
358032	13
358038	13
359008	15
359010	15
359012	15
359016	15
359020	15
359022	15
359024	15
359030	15
359036	15
359108	16
359110	16
359112	16
359116	16
359120	16
359122	16
359124	16
359130	16
359136	16
359208	17
359210	17
359212	17
359216	17
359220	17
359222	17
359224	17

Part Number	Page Number
360010	14
360012	14
360016	14
360019	14
360022	14
360025	14
360032	14
360038	14
360044	14
360050	14
420103	18
420105	18
420106	18
420108	18
420110	18
420113	18
420303	18
420305	18
420306	18
420308	18
420310	18
420313	18
420603	19
420605	19
420606	19
420608	19
425204	19
425205	19
425206	19
425207	19
425208	19
425210	19



## NOTES

---

**RIGGING HARDWARE**

**5**  
SECTION





**NATIONAL HEAD OFFICE  
NEW SOUTH WALES**

Email: [sydneysales@beaver.com.au](mailto:sydneysales@beaver.com.au)  
National Sales: 1300 783 606  
Phone: (02) 8882 5700  
Fax: (02) 8882 5899

55 Sarah Andrews Close  
Erskine Park NSW 2759  
PO Box 5001  
St Clair NSW 2759

**WESTERN AUSTRALIA**

Email: [perthsales@beaver.com.au](mailto:perthsales@beaver.com.au)  
Ph: (02) 8882 5700

**VICTORIA/ TASMANIA**

Email: [melbournesales@beaver.com.au](mailto:melbournesales@beaver.com.au)  
Ph: (02) 8882 5700

**SOUTH AUSTRALIA/  
NORTHERN TERRITORY**

Email: [adelaidesales@beaver.com.au](mailto:adelaidesales@beaver.com.au)  
Ph: (08) 8244 3555  
Fax: (08) 8244 3533

**QUEENSLAND**

Email: [brisbanesales@beaver.com.au](mailto:brisbanesales@beaver.com.au)  
Ph: (07) 3279 1100  
Fax: (07) 3279 1381

[www.beaver.com.au](http://www.beaver.com.au)